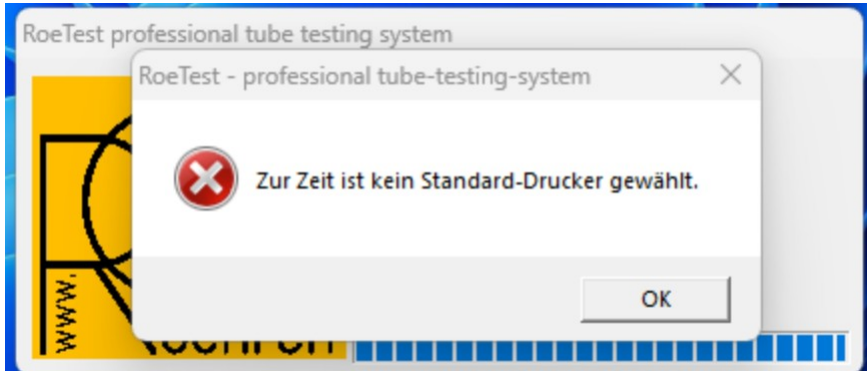


# RoeTest - das Computer-Röhren-Messgerät -

professional tube-testing-system (c) Helmut Weigl [www.roehrentest.de](http://www.roehrentest.de)

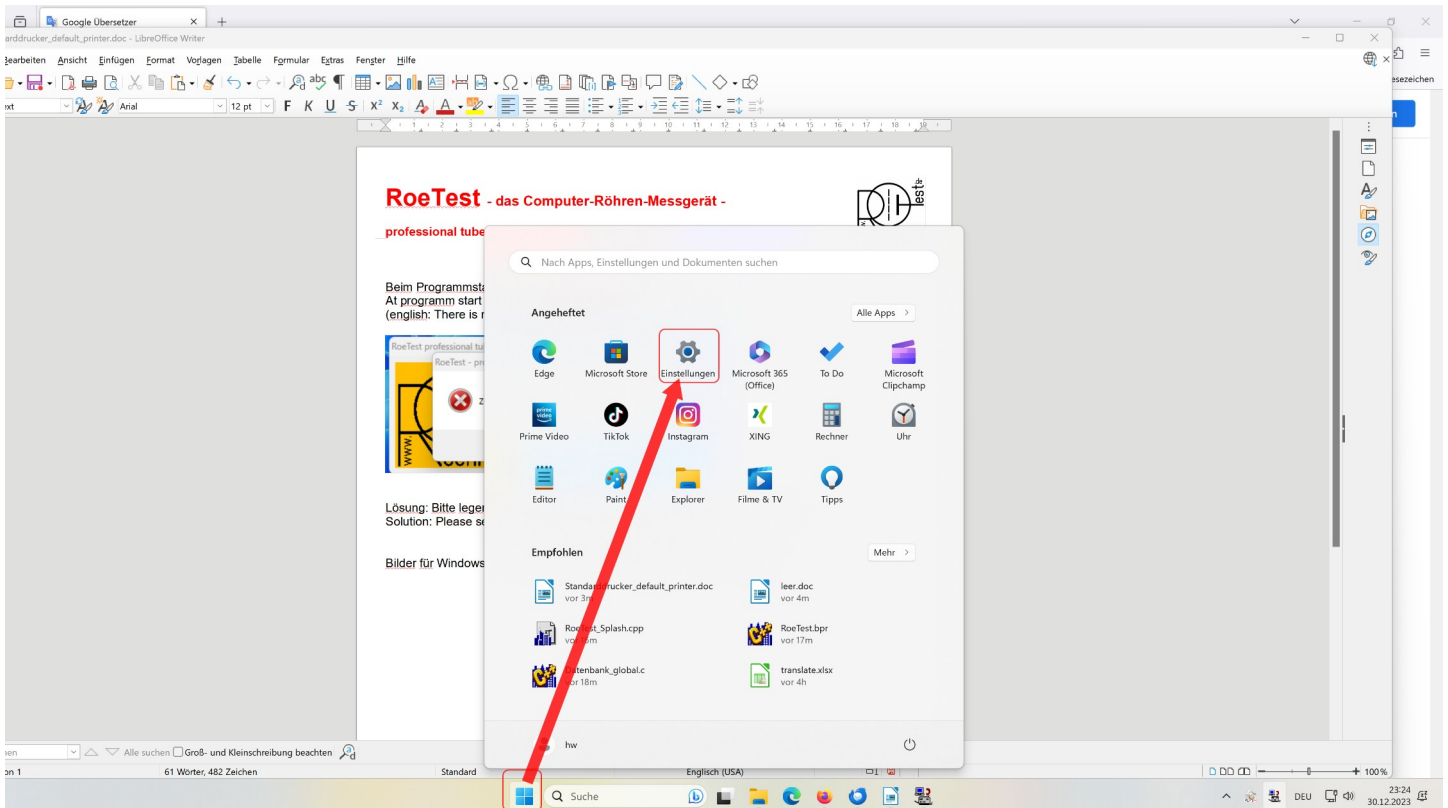


Beim Programmstart kommt folgende Fehlermeldung:  
At program start this error message appears:  
(english: There is no default printer selected in Windows settings)



Lösung: Bitte legen Sie einen Standarddrucker in den Windowseinstellungen fest.  
Solution: Please set a default printer in Windows settings.

Bilder für Windows 11 (bei anderen Windowsversionen etwas abweichend)  
goto Windows settings:

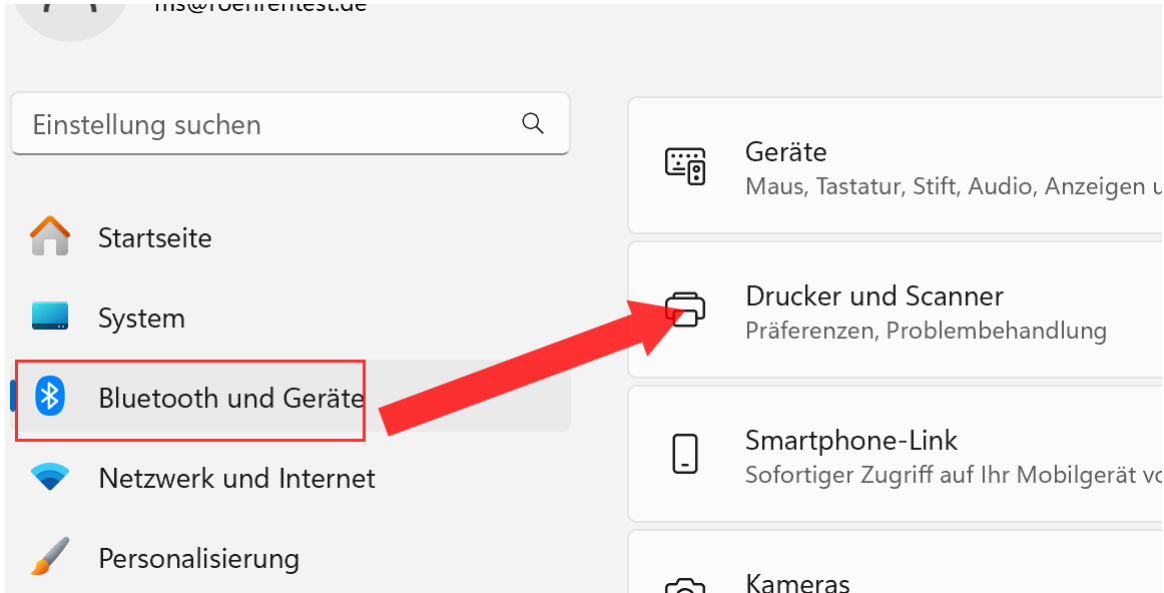


# RoeTest - das Computer-Röhren-Messgerät -

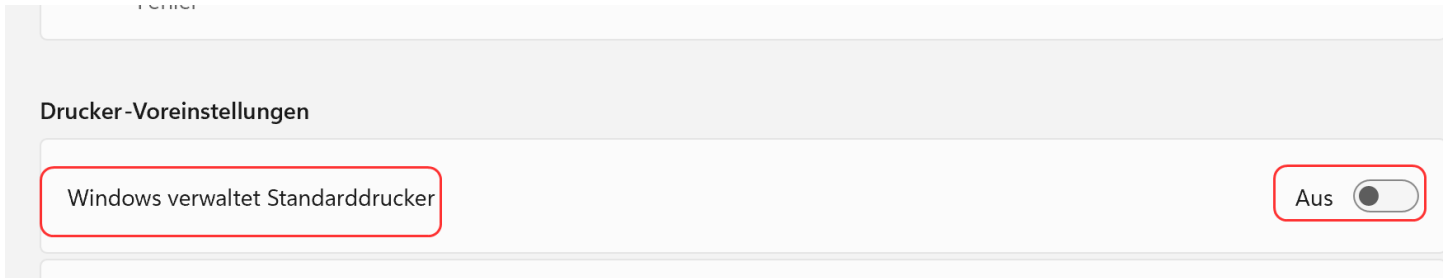
professional tube-testing-system (c) Helmut Weigl [www.roehrentest.de](http://www.roehrentest.de)



goto "Bluetooth and devices", then to printers and scanners:



scroll down in the printers list and switch off "Windows verwaltet Standarddrucker" (english: Windows manages default printer):



Click to a printer and then to the button <Als Standard> (english as default printer or similar):

