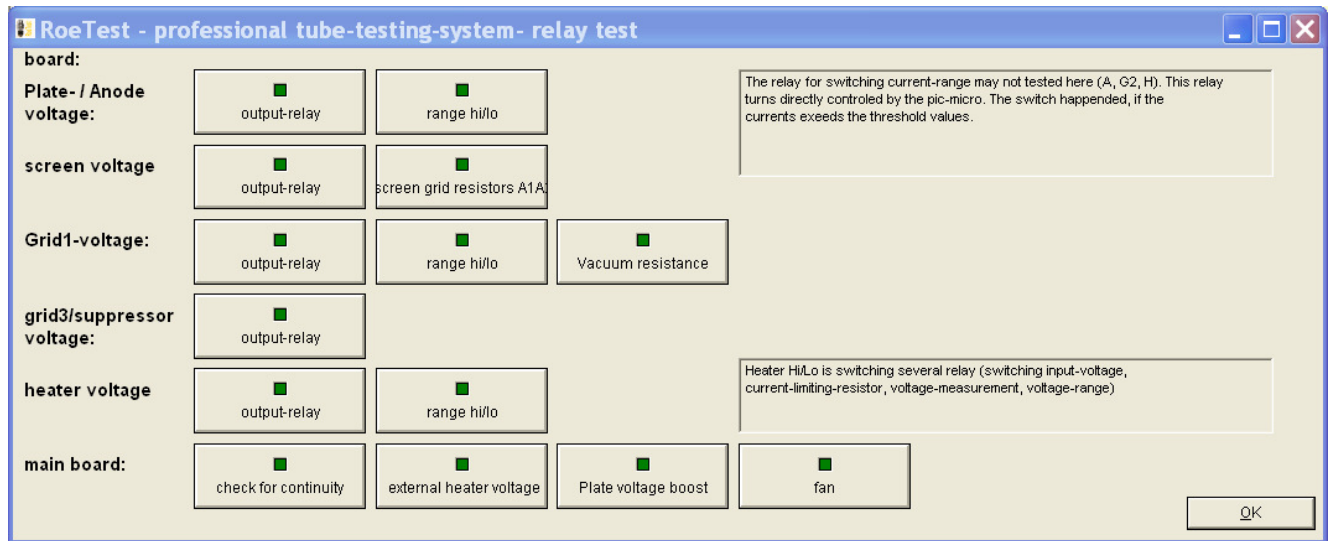


RoeTest – Computer Tube Tester / Tube Measuring Device

(c) - Helmut Weigl www.roehrentest.de

Options - Relays:



Used for testing the relays on the main board, the anode, G1, G2, G3 and heater boards.

The relays for switching the measure ranges of heater current, anode current and G2 current cannot be tested using this mask. Those relays are directly controlled by the Pic and not by the PC software.